



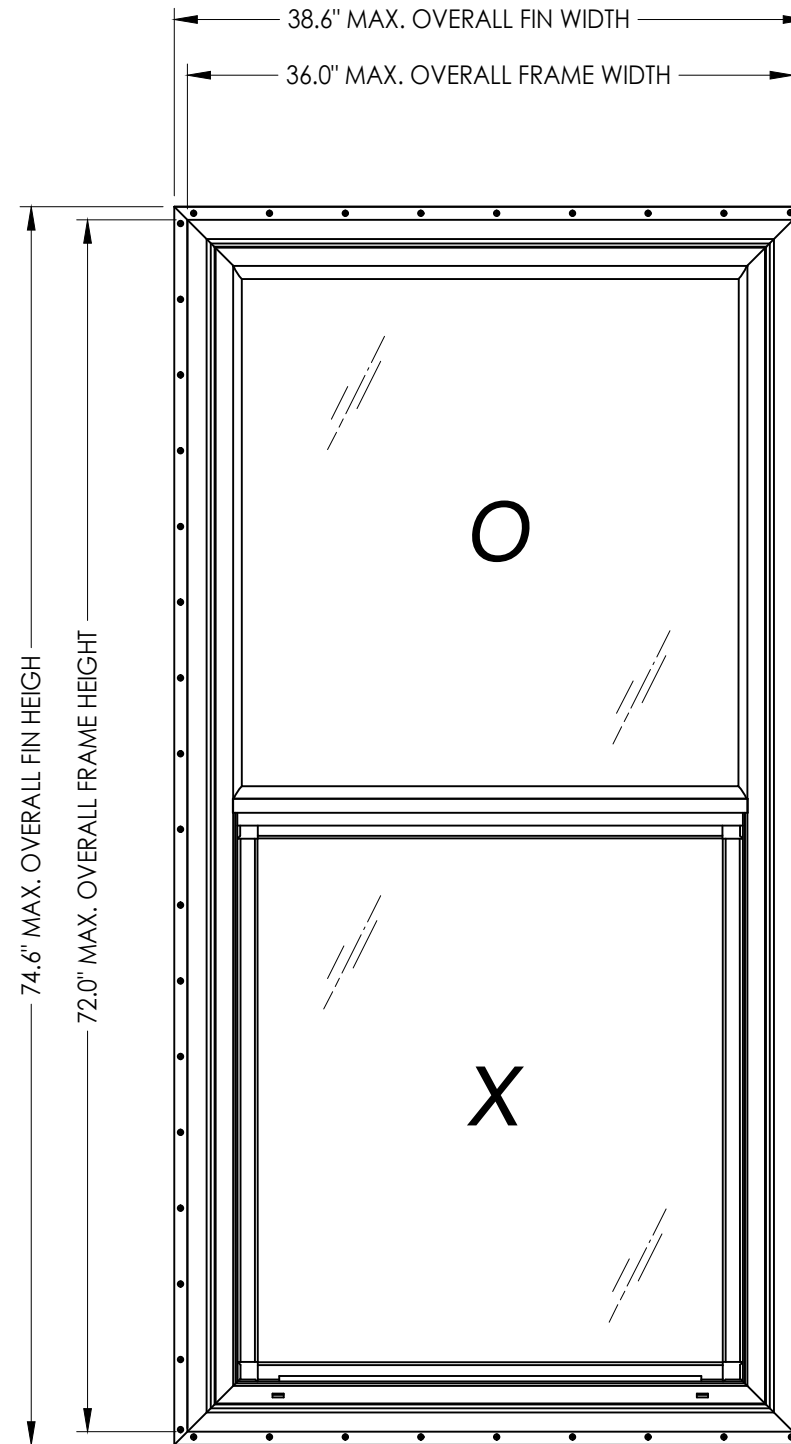
3501 CR 6 EAST
ELKHART, IN 46514

MODEL 9750 PVC SINGLE HUNG WINDOW W/ NAILING FIN "NON-IMPACT"

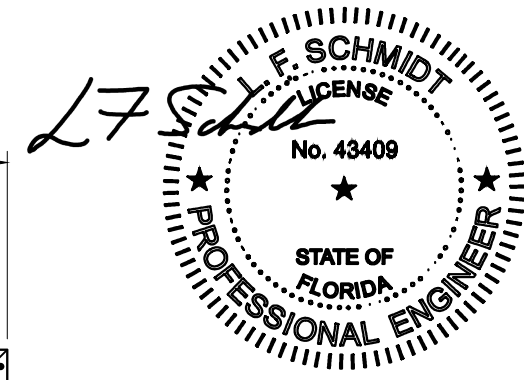
GENERAL NOTES

1. This product anchoring drawing has been developed in compliance with the 8th Edition (2023) Florida Building Code (FBC) excluding the "High Velocity Hurricane Zone". See the Certification Agency Certificate for sizes, specifications and ratings.
2. Product anchors shall be as listed and spaced as shown on details. Anchor embedment to base material shall be beyond wall dressing, stucco, foam, brick and other wall coverings.
3. Wood screws shall be installed following installation instructions of ANSI/AWC NDS 2018. All other fastener types to be installed following fastener manufacturer's installation instructions.
4. Fastener embedment depths, edge distances and center-center distances shall be as specified by the fastener manufacturer but in no instance shall they be less than shown in this drawing.
5. Where shims are used, they must be a "rigid / stiff" material that complies with the requirements of the FBC.
6. Positive and negative design pressure requirements for use with this drawing shall be determined by others for specific jobs in accordance with the governing code.
7. Site conditions not covered by this drawing are subject to further engineering analysis.

| TABLE OF CONTENTS | |
|-------------------|--|
| SHEET # | DESCRIPTION |
| 1 | Typical elevation, design pressures & general notes |
| 2 | Horizontal & vertical cross sections & bill of materials |
| 3 | Horizontal & vertical cross sections and glazing detail |
| 4 | Buck & frame anchoring |



| MAX. O.A. FIN DIMENSION | MAX. O.A. FRAME DIMENSION | DESIGN PRESSURE (PSF) | |
|-------------------------|---------------------------|-----------------------|----------|
| | | POSITIVE | NEGATIVE |
| 38.6" x 74.6" | 36.0" x 72.0" | +50.0 | -66.0 |



This item has been digitally signed and sealed by L. F. Schmidt, P.E. on the date adjacent to the seal. Printed copies of this document are not considered signed and sealed and the signature must be verified on any electronic copies.

THIS PRODUCT APPROVAL IS VALID ONLY FOR THE STATE OF FLORIDA

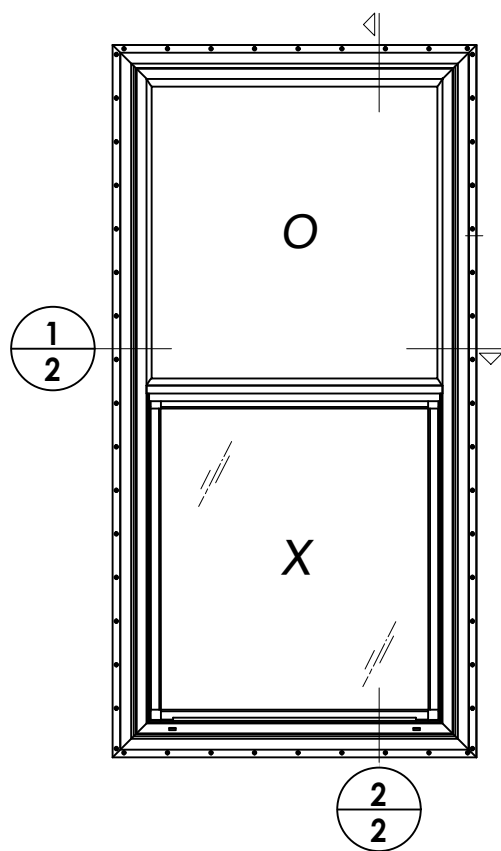
Documents Prepared By:
Lyndon F. Schmidt
P.E. No. 43409

RW BUILDING CONSULTANTS, INC.
P.O. Box 230, Valrico, FL 33595
Phone No.: 813.659.9197
FBPE Registry No. 9813

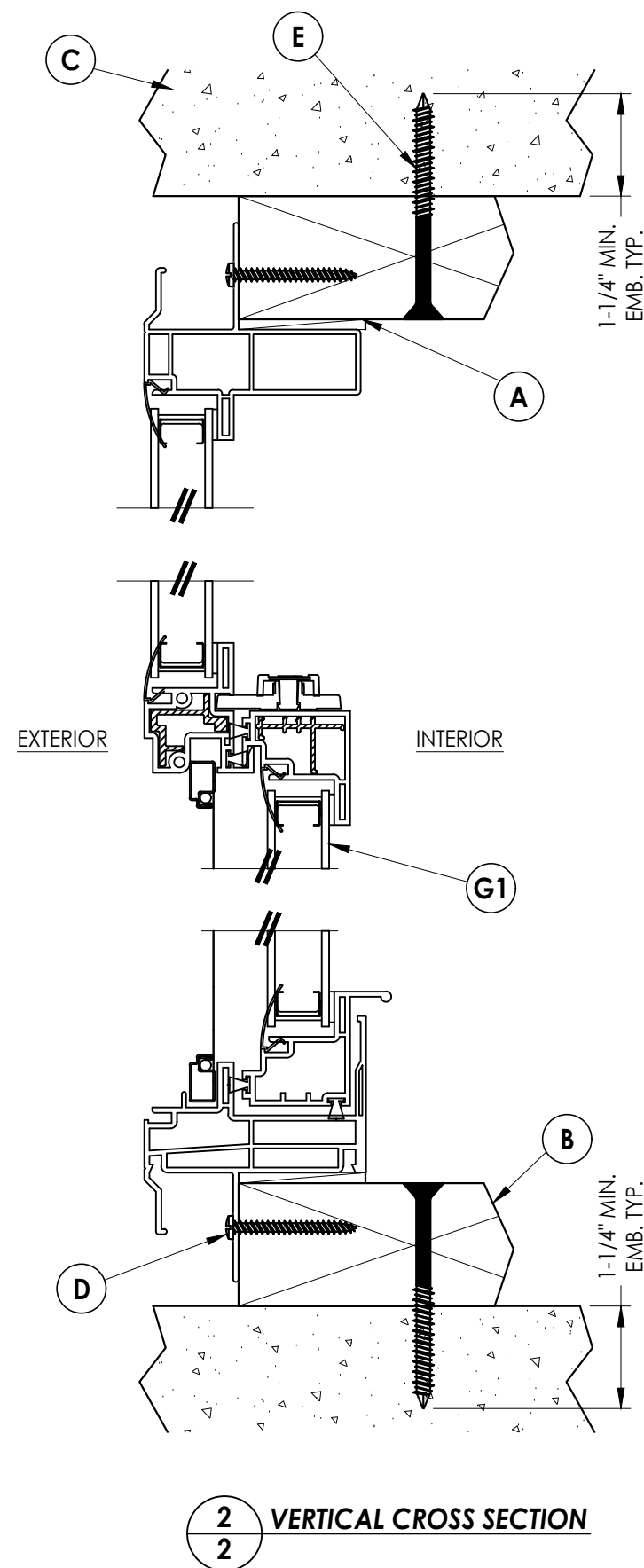
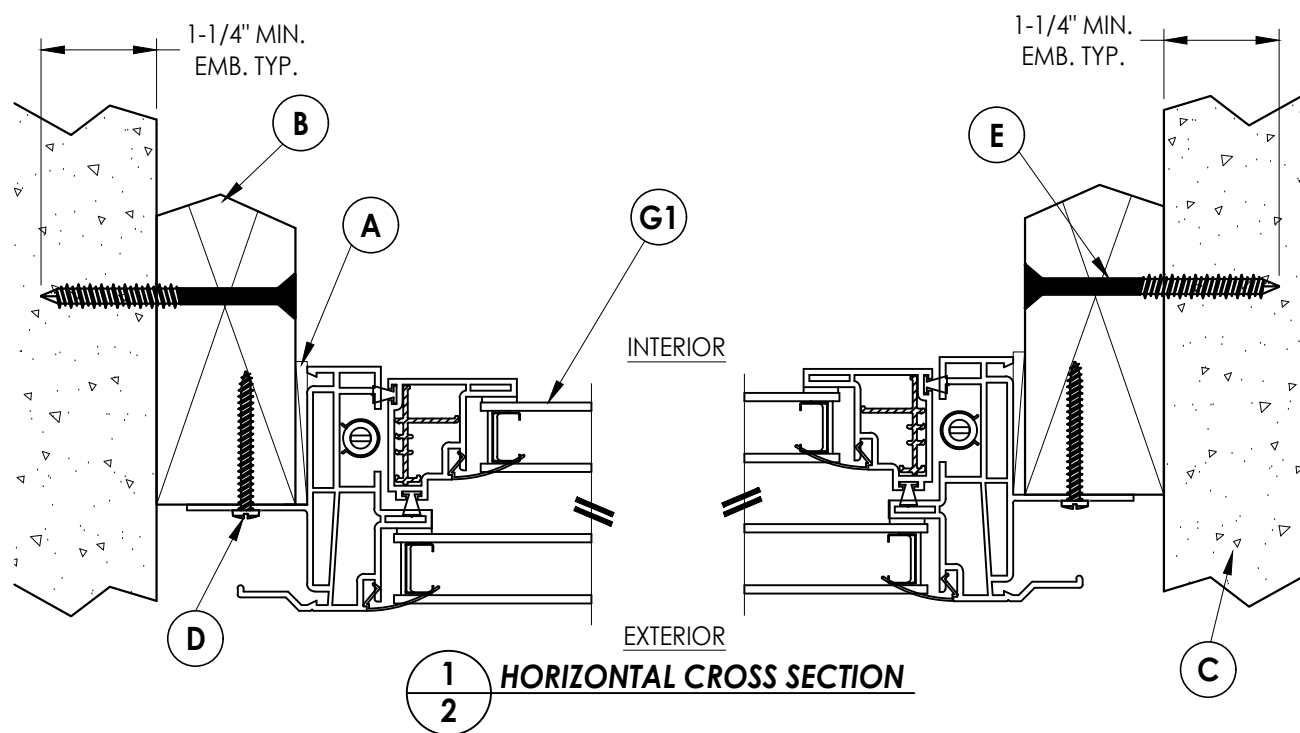
PRODUCT: SINGLE HUNG WINDOW
PART OR ASSEMBLY: TYPICAL ELEVATION, DESIGN PRESSURES & GENERAL NOTES

| NO. | DATE | REVISIONS | | | | |
|-----|----------|-----------|-----|---------|--------|-----|
| | | UPDATE TO | ED. | (2023) | FBC | |
| 10 | 9/18/23 | UPDATE TO | 8TH | ED. | (2023) | FBC |
| 9 | 9/03/20 | UPDATE TO | 7TH | ED. | (2020) | FBC |
| 8 | 10/03/17 | UPDATE TO | 6TH | ED. | (2017) | FBC |
| 7 | 2/23/15 | UPDATE TO | 5TH | ED. | (2014) | FBC |
| 6 | 4/26/12 | REVISE | CO. | ADDRESS | | |
| | | | | | | |
| | | | | | | |

DATE: 6/01/10
SCALE: N.T.S.
DWG. BY: AP
CHK. BY: LFS
DRAWING NO.: FL-993.2
SHEET 1 OF 4



| BILL OF MATERIALS | | |
|-------------------|--|----------|
| ITEM | DESCRIPTION | MATERIAL |
| A | 1/4" MAX. SHIM SPACE | - |
| B | 2X BUCK (SG >= 0.42) | WOOD |
| C | MASONRY - 3,000 PSI MIN. CONCRETE CONFORMING TO ACI 301 OR HOLLOW BLOCK CONFORMING TO ASTM C90 | CONCRETE |
| D | #8 X 1-1/2" PPH SMS (1-3/8" MIN. EMBEDMENT) | STEEL |
| E | 1/4" X 2-3/4" DeWALT OR ITW CONCRETE SCREW | STEEL |
| F | #8 X 2" PPH SMS (1-3/8" MIN. EMBEDMENT) | STEEL |
| G | 2X FRAMING (SG >= 0.42) | WOOD |



Documents Prepared By:
Lyndon F. Schmidt
P.E. No. 43409

RW BUILDING CONSULTANTS, INC.
P.O. Box 230, Vairico, FL 33595
Phone No.: 813.659.9197
FBPE Registry No. 9813

PRODUCT: SINGLE HUNG WINDOW
PART OR ASSEMBLY: HORIZONTAL & VERTICAL CROSS SECTIONS & BILL OF MATERIALS

| NO. | DATE | REVISIONS | | | |
|-----|----------|-----------|--------------------------|-----------|----|
| | | BY | DATE | REVISIONS | BY |
| 10 | 9/18/23 | LFS | UPDATE TO 8TH ED. (2023) | FBC | |
| 9 | 9/03/20 | DAC | UPDATE TO 7TH ED. (2020) | FBC | |
| 8 | 10/03/17 | JK | UPDATE TO 6TH ED. (2017) | FBC | |
| 7 | 2/23/15 | JK | UPDATE TO 5TH ED. (2014) | FBC | |
| 6 | 4/26/12 | RW | REVISE CO ADDRESS | | |

DATE: 6/01/10

SCALE: N.T.S.

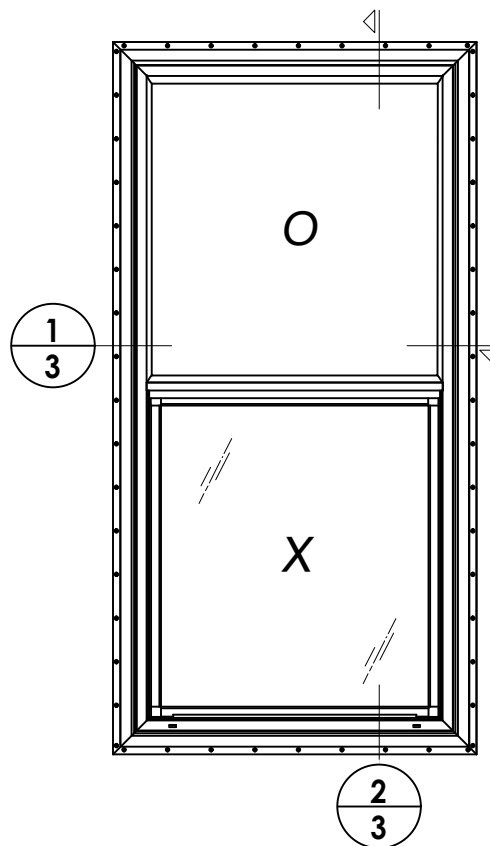
DWG. BY: AP

CHK. BY: LFS

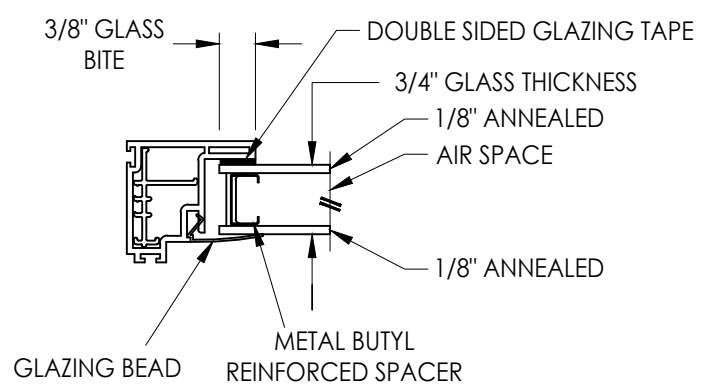
DRAWING NO.:

FL-993.2

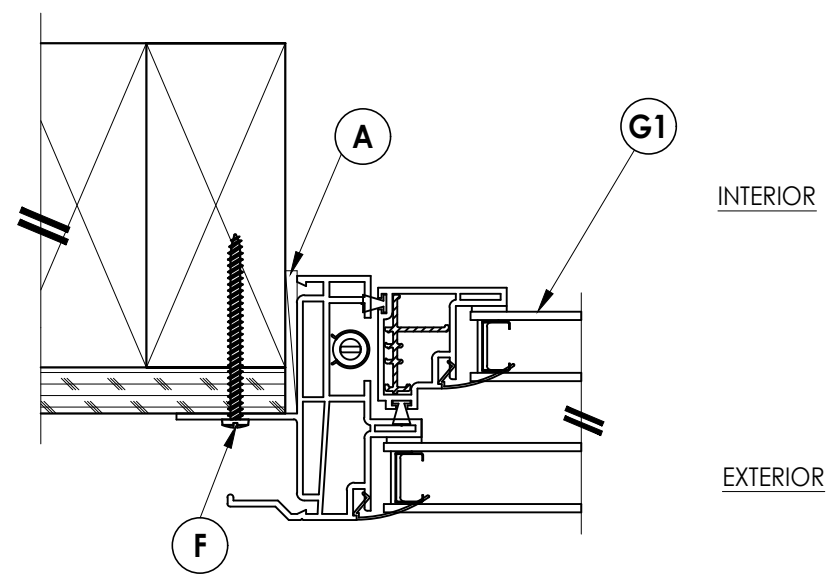
SHEET 2 OF 4



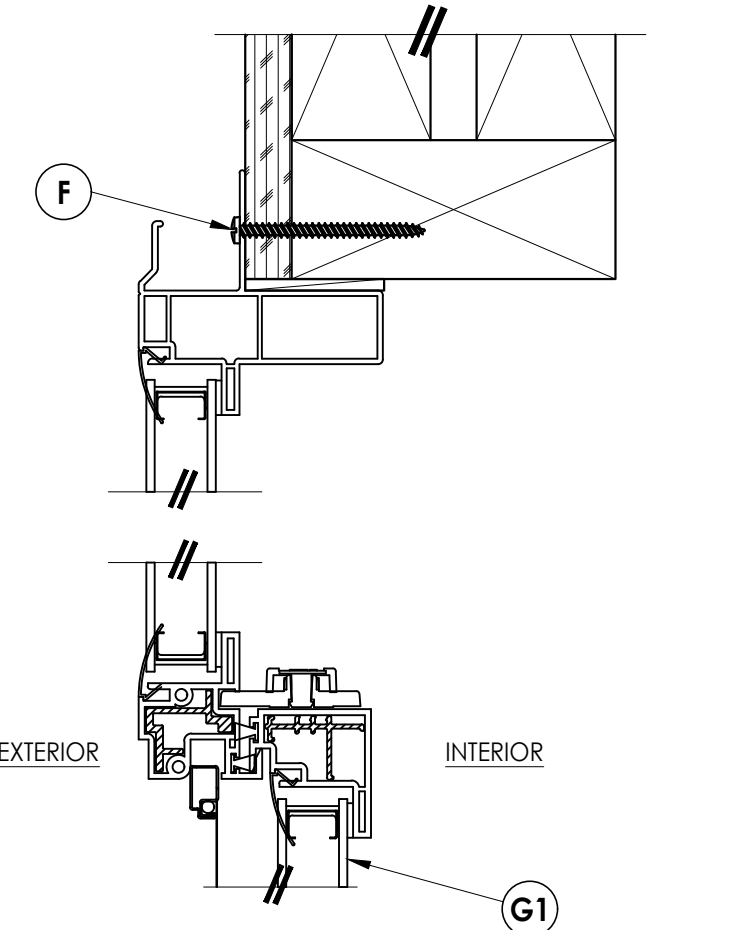
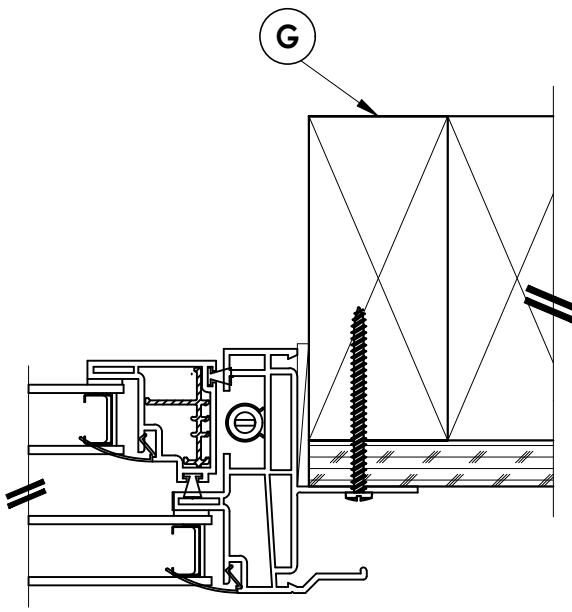
1
3 HORIZONTAL CROSS SECTION



G1 GLAZING DETAIL



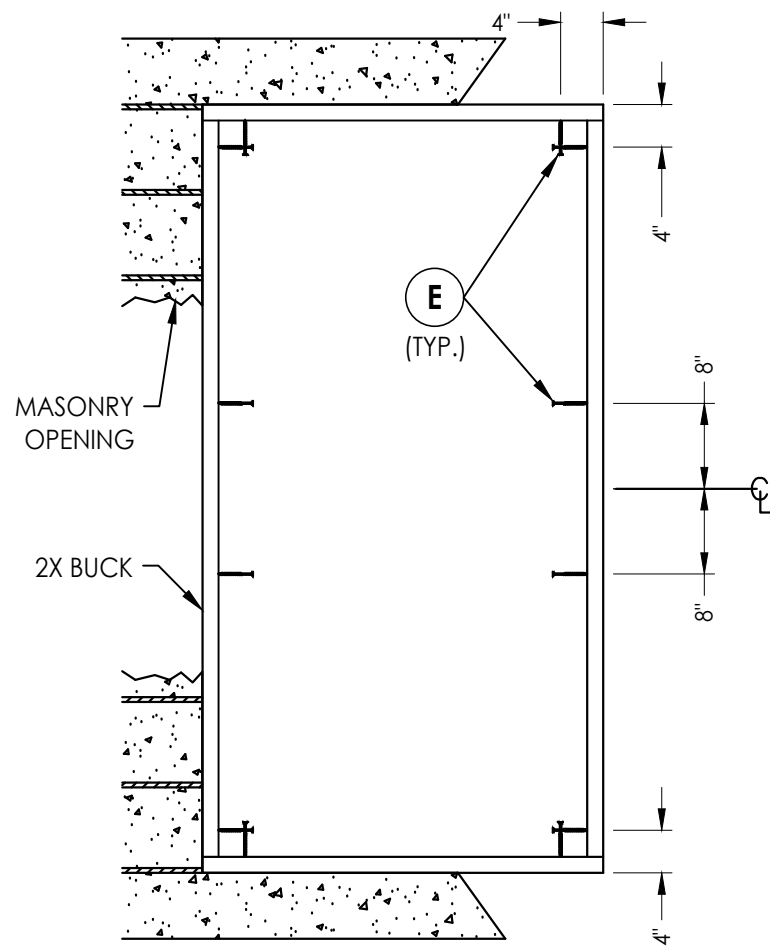
2
3 VERTICAL CROSS SECTION



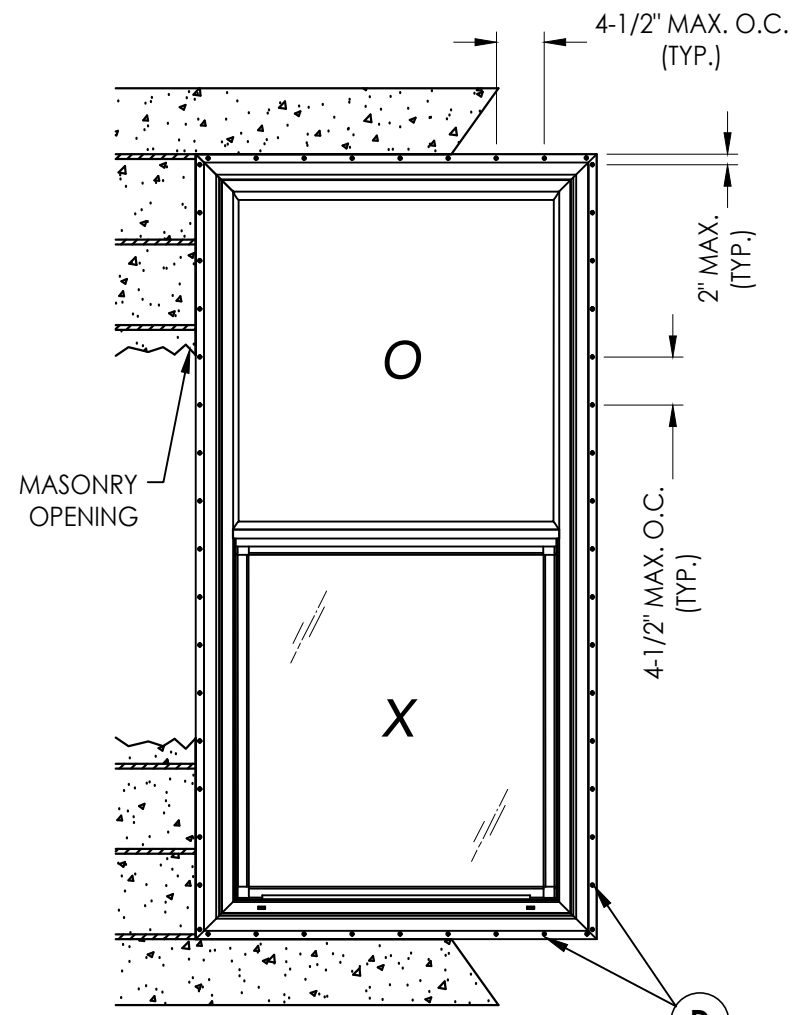
2
3 VERTICAL CROSS SECTION

| | | | | |
|---|----------|--|-----|-----------|
| Documents Prepared By: Lyndon F. Schmidt P.E. No. 43409 | | BUILDING CONSULTANTS, INC. P.O. Box 230, Vairico, FL 33595 Phone No.: 813.659.9197 FBPE Registry No. 9813 | | |
| PRODUCT: SINGLE HUNG WINDOW | | PART OR ASSEMBLY: HORIZONTAL & VERTICAL CROSS SECTIONS AND GLAZING DETAIL | | |
| 10 | 9/18/23 | UPDATE TO 8TH ED. (2023) | FBC | LFS |
| 9 | 9/03/20 | UPDATE TO 7TH ED. (2020) | FBC | DAC |
| 8 | 10/03/17 | UPDATE TO 6TH ED. (2017) | FBC | JK |
| 7 | 2/23/15 | UPDATE TO 5TH ED. (2014) | FBC | JK |
| 6 | 4/26/12 | REVISE CO ADDRESS | | RW |
| | NO. | DATE | | BY |
| | | | | REVISIONS |
| DATE: 6/01/10 | | | | |
| SCALE: N.T.S. | | | | |
| DWG. BY: AP | | | | |
| CHK. BY: LFS | | | | |
| DRAWING NO.: FL-993.2 | | | | |
| SHEET 3 OF 4 | | | | |

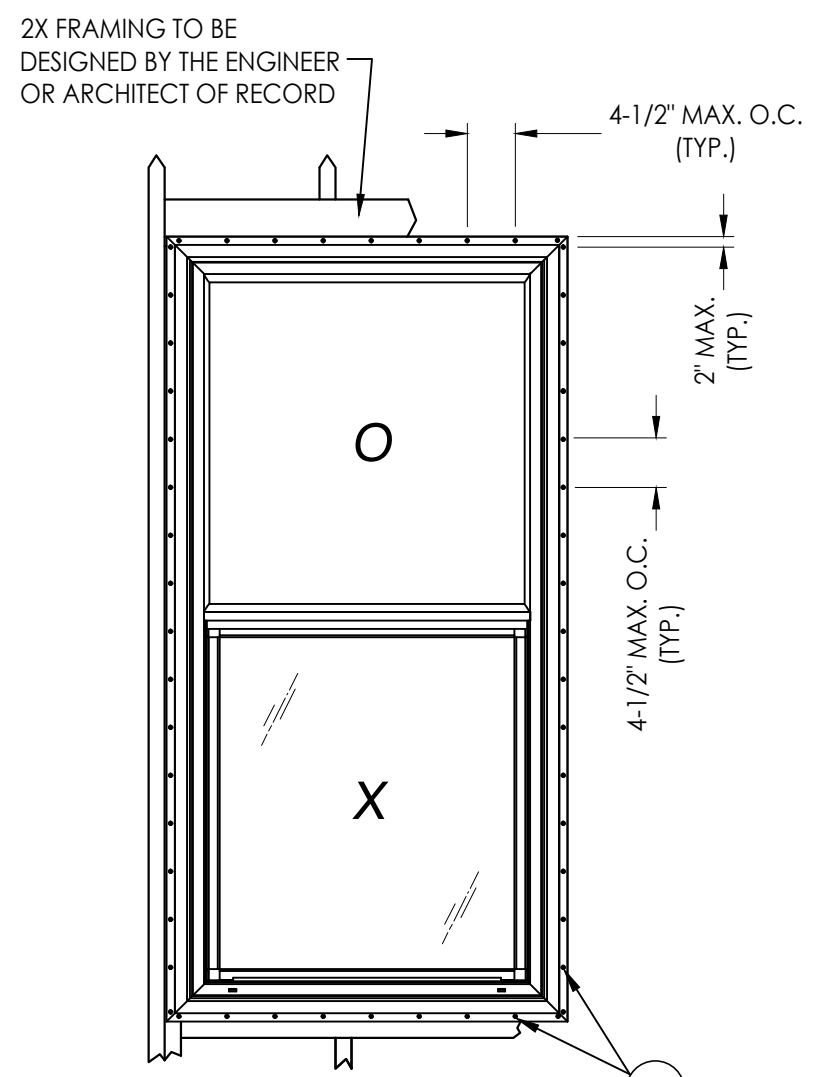
Z:\2023 FBC Drawings\Lippert Components, Inc\FL-993 R19\FL-993.2.dwg



BUCK ANCHORING



**FRAME ANCHORING
MASONRY CONSTRUCTION**



**FRAME ANCHORING
STUD CONSTRUCTION**

CONCRETE ANCHOR NOTES:

1. Concrete anchor locations at the corners may be adjusted to maintain the min. edge distance to mortar joints.
2. Concrete anchor locations noted as "MAX. ON CENTER" must be adjusted to maintain the min. edge distance to mortar joints, additional concrete anchors may be required to ensure the "MAX. ON CENTER" dimension are not exceeded.
3. Concrete anchor table:

| ANCHOR TYPE | ANCHOR SIZE | MIN. EMBEDMENT | MIN. CLEARANCE TO MASONRY EDGE | MIN. CLEARANCE TO ADJACENT ANCHOR |
|-------------------|-------------|----------------|--------------------------------|-----------------------------------|
| ITW TAPCON® | 1/4" | 1-1/4" | 2" | 4" |
| DeWALT ULTRACON+® | 1/4" | 1-1/4" | 1" | 4" |

WOOD SCREW INSTALLATION NOTES:

1. Maintain a minimum 5/8" edge distance, 1" end distance, & 1" o.c. spacing of wood screws to prevent the splitting of wood.

Documents Prepared By:
Lyndon F. Schmidt
P.E. No. 43409

RW BUILDING CONSULTANTS, INC.
P.O. Box 230, Valrico, FL 33595
Phone No.: 813.659.9197
FBPE Registry No. 9813

PRODUCT:
SINGLE HUNG WINDOW

PART OR ASSEMBLY:
BUCK & FRAME ANCHORING

| NO. | DATE | REVISIONS |
|-----|----------|------------------------------|
| 10 | 9/18/23 | UPDATE TO 8TH ED. (2023) FBC |
| 9 | 9/03/20 | UPDATE TO 7TH ED. (2020) FBC |
| 8 | 10/03/17 | UPDATE TO 6TH ED. (2017) FBC |
| 7 | 2/23/15 | UPDATE TO 5TH ED. (2014) FBC |
| 6 | 04/26/12 | REVISE CO ADDRESS |
| | | BY |
| | | DATE |

DATE: 6/01/10
SCALE: N.T.S.
DWG. BY: AP
CHK. BY: LFS
DRAWING NO.: FL-993.2
SHEET 4 OF 4